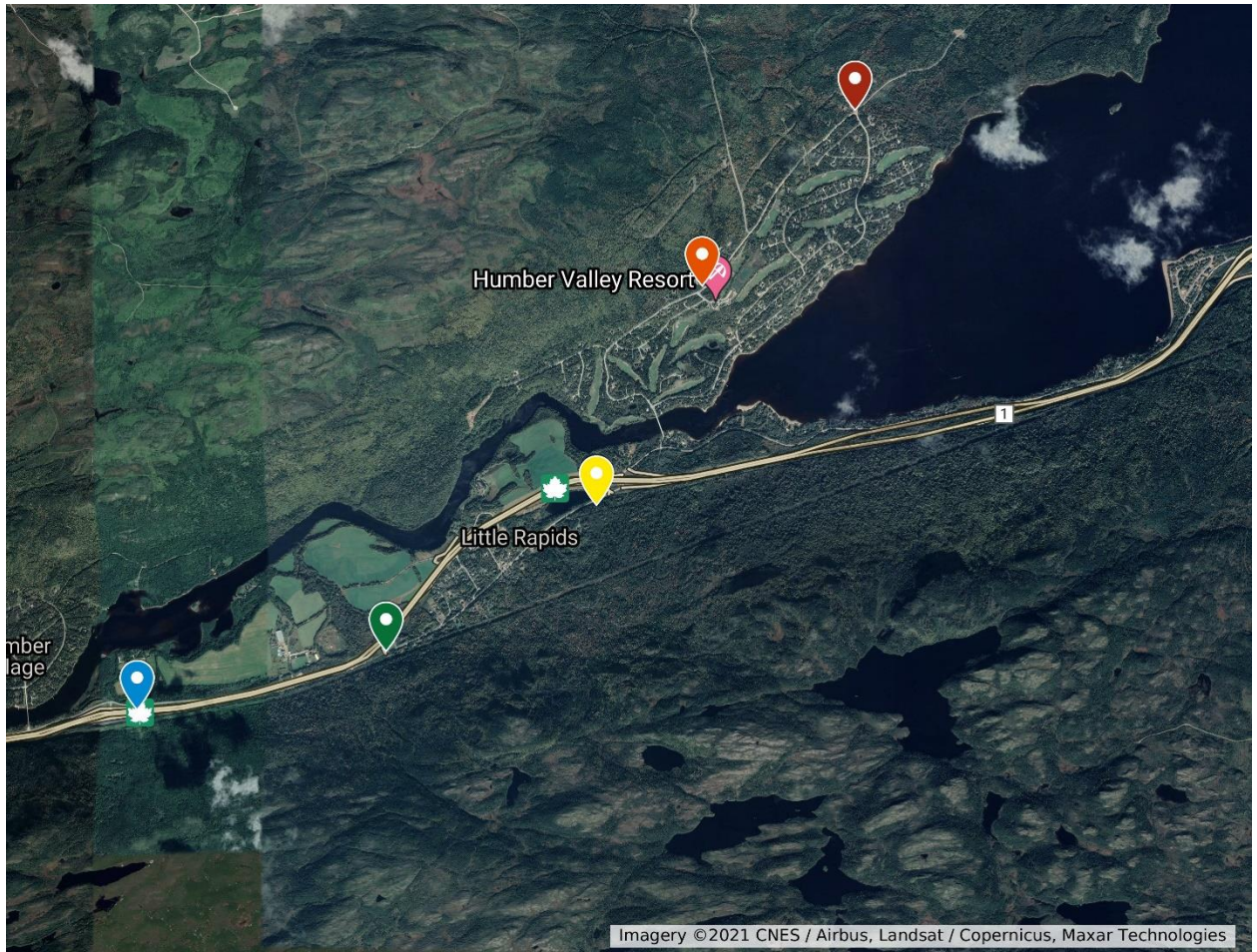


NL021: Humber Valley West

Stop	Latitude	Longitude	Stop Description
1	49.025	-57.674	Intersection of Lakeside Dr. and Mountain View
2	49.013	-57.69	On Mountain View; road to utility buildings on the right
3	48.998	-57.701	East end of Bonnell Drive, Little Rapids
4	48.988	-57.723	West end of Bonnell Drive, Little Rapids
5	48.984	-57.749	Intersection with Ledingham Dr.
6	48.986	-57.771	Intersection of Pine St. and Spruce St.
7	48.981	-57.796	West end of Marble View Dr. (extension of Pine St.)
8	48.963	-57.81	Driveway on right (#177)
9	48.94988	-57.83082	
10	48.94427	-57.86103	







Imagery ©2021 CNES / Airbus, Landsat / Copernicus, Maxar Technologies