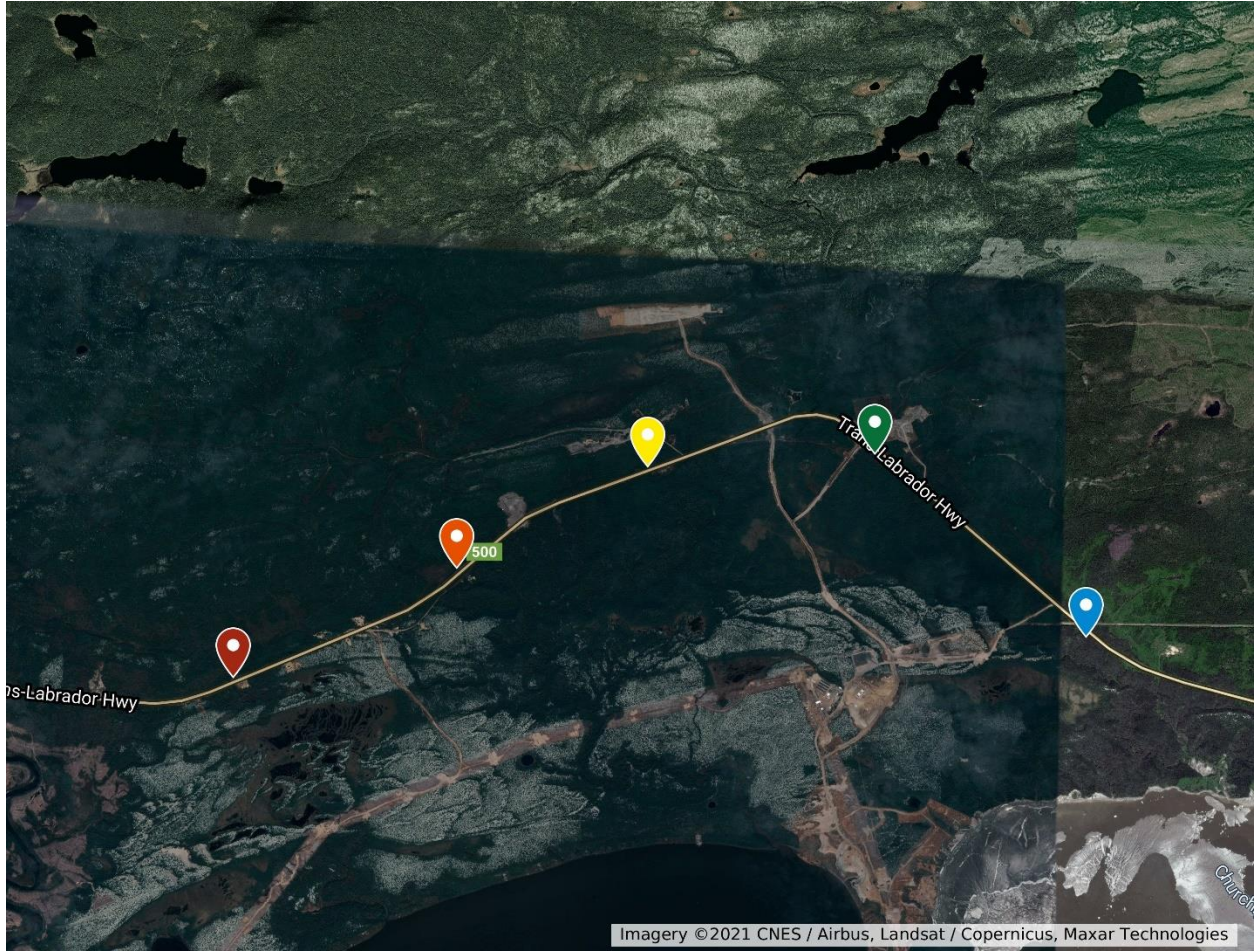


LAB01: Trans Labrador Highway 500

Stop	Latitude	Longitude	Stop Description
1	53.2674	-60.8457	
2	53.2742	-60.8224	
3	53.2805	-60.8025	
4	53.2813	-60.7788	
5	53.2699	-60.7568	
6	53.2651	-60.7338	
7	53.2687	-60.7096	
8	53.2733	-60.6874	
9	53.273	-60.6599	
10	53.2732	-60.6349	





Imagery ©2021 CNES / Airbus, Landsat / Copernicus, Maxar Technologies

